

## HOW TO MEASURE CONTROL CABLES “MEASURE TWICE. ORDER ONCE.”

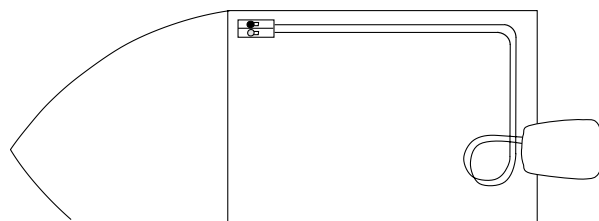
### FOR A NEW INSTALLATION:

Measure cable routing path from control head attachment point to engine connection, as follows:

### OUTBOARDS:

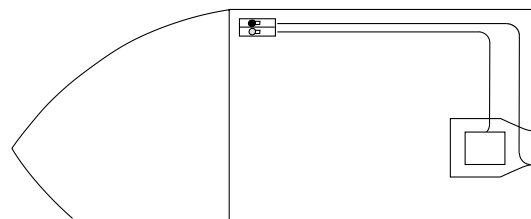
Measure from control along unobstructed cable routing to center of outboard. Add four feet to allow for loop, which provides unrestricted engine movement. Round up to the next foot and order required cable part number. (Last two digits of cable part number equal cable length in feet.)

### TYPICAL OUTBOARD CABLE ROUTING:



TYPICAL OUTBOARD CABLE ROUTING  
(MEASURE CABLE PATH + ROUND UP TO NEXT EVEN FOOT + ADD 4 FEET FOR LOOP AT ENGINE TO PREVENT KINKING)

### TYPICAL STERN DRIVE (I/O) OR INBOARD CABLE ROUTING:



TYPICAL STERN DRIVE/INBOARD CONTROL CABLE ROUTING  
(MEASURE CABLE PATH + ROUND UP TO NEXT EVEN FOOT)

### INBOARDS & STERN DRIVES:

Measure from control along unobstructed cable routing to shift and/or throttle connection. Round this dimension up to the next foot and order required cable part number. (Last two digits of cable part number equal cable length in feet.)

### FOR REPLACEMENT OF EXISTING CABLE:

If you removed the old cable, measure for replacement cable as follows:

Measure from tip to tip and round up to the next foot, if necessary (aftermarket cables are sold in foot increments up to 30 feet. After that use only even foot increments).

The control cable part number contains its length. SeaStar Solutions cables are usually listed as CC???XX, where XX = length in feet.

### FOR EXAMPLE:

Part Number CCX63320 = 20 ft. CCX633 Control Cable

or

Morse® Part Number \*032377-03-240.0 = 20 ft. 33C Control Cable

(240" = 20')

\* This cable is no longer available.  
Use CCX633XX as a replacement

