

Meet the new NSS evo3S™.

Our smoothest MFD yet, with unprecedented levels of built-in functionality.

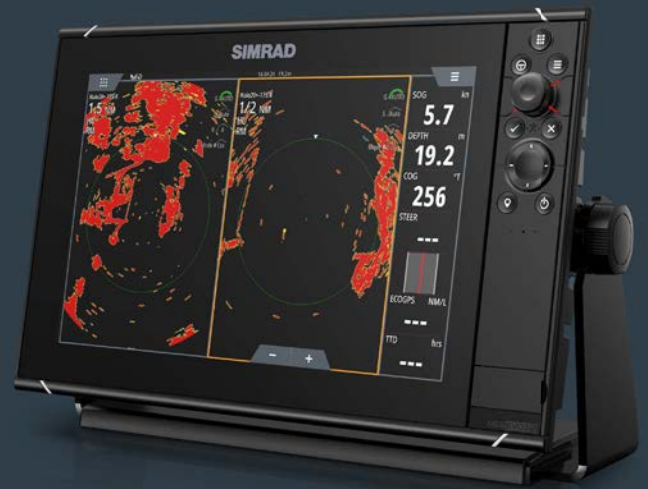


Improved US Charts + C-MAP Reveal Florida.

New preloaded US Charts include improved, high resolution inland and coastal coverage, Easy Routing™ capability and C-MAP Reveal Florida layer. In addition to the preloaded C-MAP chart, NSSevo3S is compatible with a wide range of charting providers, including C-MAP®, Navionics®, CMOR and Florida Marine Tracks.

Best-ever processing power.

New IMX8 processor delivers 2X faster page loading time, smoother transitions and quicker chart updates for a completely new boating experience.



UI improvements.

With a new look and feel, enhanced access to chart orientation, tide monitoring and audio control.

Enhanced Sonar performance.

Built-in support for Active Imaging™ with CHIRP, SideScan and DownScan Imaging™, ForwardScan® and more – plus plug-in connectivity to external sonar modules, like the Simrad S5100 high-performance sonar. Connect multiple transducers to a single display with dual transducer ports.

Key Features:

- Built-in CHIRP Sonar
- New high-resolution, preloaded US Charts with C-MAP Reveal Florida layer
- Improved boating experience with the new IMX8 processor
- High-resolution SolarMAX™ IPS Displays
- HALO™ Radar compatibility
- FLIR IP Camera Support
- WM-4 SiriusXM® Weather/Audio
- Fast and simple networking
- Wireless connectivity to smartphones/tablets

NSS EVO3S

Product Specifications

	NSSevo3S 9	NSSevo3S 12	NSSevo3S 16
Dimensions	11.30 x 6.55 x 3.50"	13.84 x 8.87 x 3.82"	117.19 x 10.08 x 3.82"
	with bracket 11.30 x 7.07 x 3.72"	with bracket: 14.85 x 9.47 x 4.7"	with bracket: 18.19 x 10.39 x 4.80"
Weight	3.11lb	6.83lb	10.25lb
Display size and type	High Visibility SolarMax HD™ IPS 9" optically bonded TFT	High Visibility SolarMax HD™ IPS 12.1" optically bonded TFT	High Visibility SolarMax HD™ IPS 15.6" optically bonded TFT
Display screen brightness	1200 nits	1200 nits	1200 nits
Display resolution	720 x 1280	800 x 1280	1080 x 1920
WiFi connectivity	Internal WiFi 802.11		
Sonar frequencies	40-250kHz 455-800kHz		
Sonar max depth	3000'+ (tested with B175L)		
GPS	Internal, 10Hz, WASS, MSAS, EGNOS, GLONASS		
Radar	Broadband Radar, Halo Pulse Compression Radar, HD Pulse Radar		
Sonar	Two 9 pin Xsonic Sonar ports. Sonar port 1: Single channel CHIRP, 50/200 khz, HDI. Sonar port 2: Single channel CHIRP, 50/200 khz, TotalScan™, LSS HD, ForwardScan™. Compatible with: SonarHub™, BSM-3, BSM-2, network sonar		
Weather	SiriusXM® via WM-4 (USA only), GRIB		
AIS	Receive AIS data over NMEA 2000® or *NMEA 0183 (has to be wired to all NSS processors)		
Auto pilot integration	Full auto pilot control and commissioning		
Autopilot steering modes	Auto, Nav., No Drift, Follow up, Non-follow up, Turn patterns, Standby, *Wind, *Wind NAV. (*Boat type set to Sail)		
Autopilot turn patterns	U-turn, Spiral-turn, C-turn, Zig-zag, Square-turn, Lazy S-turn, Depth contour tracking		
Supported Charts	Insight, Navionics® (Gold, NAV+ Platinum+), C-MAP® (MAX N, MAX N+, Reveal) NV Digital (Raster US Charts), and more		
Digital switching	BEP C-Zone, Naviop™		
External storage	2 MicroSD slots, max. 32GB each. Larger if formatted to NTFS		
Internal storage	32 GB		
Multi-media	viaSonicHub®2, Fusion-Link™, *SiriusXM, **JL Audio®. (*USA only, **AUST. & NZ only)		
Waypoints, routes & tracks	6000 waypoints, 500 Routes with 100 max route points, 50 tracks with up to 12,000 track points.		